

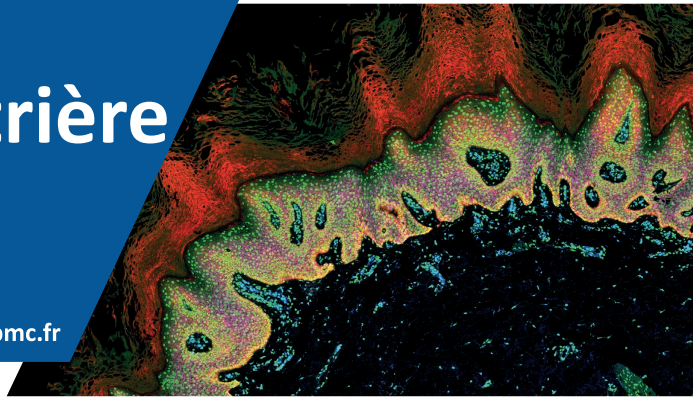
Cytométrie Pitié-Salpêtrière

Since 2007

PARIS - FRANCE

cyps@sorbonne-universite.fr

www.cytometrie.pitie-salpetriere.upmc.fr



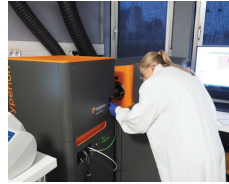
How to solve your high dimensional cell analysis challenges ?

Deep single cell profiling cytometry CyTOF® XT - Cell suspension



- 50 markers
- Automated calibration, real-time signal optimization and internal normalization
- Low compensations
- No autofluorescence
- Stained frozen samples for dry ice shipment
- Acquisition 24h/24

Spatial biology Hyperion™ - Tissue imaging



- 40 markers
- Automated calibration
- 1µm precision
- No autofluorescence
- FFPE or fresh frozen tissues

Services

Antibody conjugation service

Stained and fixed samples are received frozen

Sample acquisition

Full project option

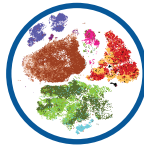


High dimensional data analysis

Fully automated analysis (Maxpar Pathsetter)

Cell segmentation (Visiopharm)

Full project analysis option



Support

Panel design

Staining protocol guidelines

Help to define a bioinformatics pipeline

Results interpretation

Training

Supervised and unsupervised data analyses

Multiparametric imaging data analysis

Customized training on demand



OMIQ
by Dotmatics



VISIOPHARM™



CellProfiler™
cell image analysis software



histoCAT
Histology Topography Cytometry Analysis Toolbox



Inserm

